

## **STL Taper Bushings**

**G-Yo**



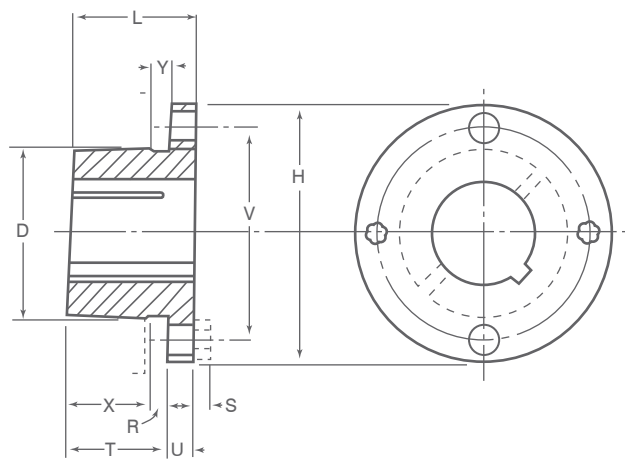
STL Taper bushings are made of tough malleable iron with indestructible keys on both shaft and hub. It has high torque carrying capacity and the external key provides enough force with no torque on the capscrews. The double split barrel assures true concentricity grips.

The standard bore sizes are from 3/8"~10".

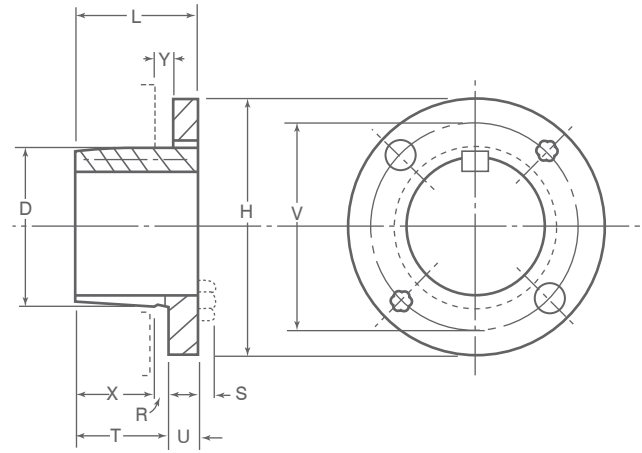


# STL Taper bushing

**G-H**



TYPE 1



TYPE 2

**TYPE 1**

**Bushing Specifications**

Part No.	Dimensions												Type 1 Bore Range	Cap Screws		Av. Wt. Lbs.	Wrench Torque In. -Lbs.
	L	U	T	D		H	V	W	X	Y	R	S		No.	Size		
				Large End	Small End												
G	1"	1/4"	3/4"	1.172"	1.133"	2"	19/16"	—	5/8"	3/16"	1/8"	3/16"	3/8" - 15/16"	2	1/4" x 5/8"	0.5	95
H	1 1/4"	1/4"	1"	1.625"	1.570"	2 1/2"	2"	—	7/8"	3/16"	1/8"	3/16"	3/8" - 1 3/8"	2	1/4" x 3/4"	0.8	95

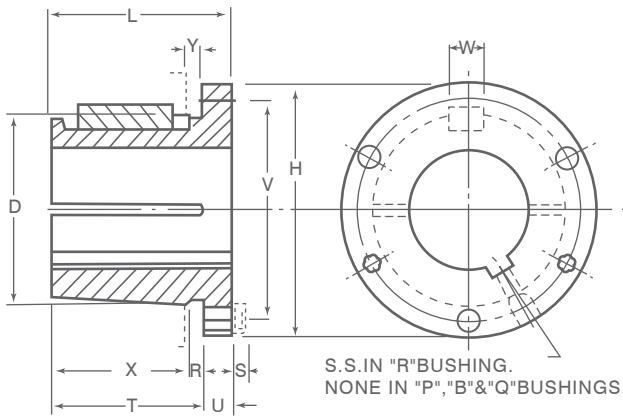
**TYPE 2**

**Bushing Specifications**

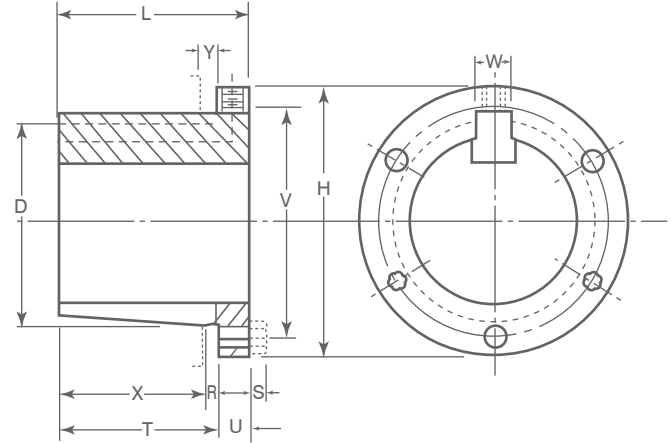
Part No.	Dimensions												Type 2 Bore Range	Cap Screws		Av. Wt. Lbs.	Wrench Torque In. -Lbs.
	L	U	T	D		H	V	W	X	Y	R	S		No.	Size		
				Large End	Small End												
G	1"	1/4"	3/4"	1.172"	1.133"	2"	19/16"	—	5/8"	3/16"	1/8"	3/16"	1"	2	1/4" x 5/8"	0.5	95
H	1 1/4"	1/4"	1"	1.625"	1.570"	2 1/2"	2"	—	7/8"	3/16"	1/8"	3/16"	17/16" - 1 1/2"	2	1/4" x 3/4"	0.8	95

# STL Taper bushing

P-R



TYPE 1



TYPE 2

TYPE 1

Bushing Specifications

Part No.	Dimensions												Type 1 Bore Range	Cap Screws		Av. Wt. Lbs.	Wrench Torque In. -Lbs.
	L	U	T	D		H	V	W	X	Y	R	S		No.	Size		
				Large End	Small End												
P1	1 15/16	13/32	1 17/32	1.9375	1.8555	3"	27/16	3/8"	15/16	7/32	7/32	1/4	1/2 - 17/16	3	5/16 x 1	1.3	192
P2	2 15/16	13/32	2 17/32	1.9375	1.7930	3"	27/16	3/8	25/16	7/32	7/32	1/4	3/4 - 17/16	3	5/16 x 1	1.5	192
P3	4 7/16	13/32	4 1/32	1.9375	1.6993	3"	27/16	3/8	3 13/16	7/32	7/32	1/4	1 1/8 - 13/8	3	5/16 x 1	2	192
B	1 15/16	1/2	1 7/16	2.625	2.5567	3 11/16	3 1/8	1/2	13/16	7/32	1/4	1/4	1/2 1 - 15/16	3	5/16 x 1 1/4	1.8	192
Q1	2 1/2	17/32	1 31/32	2.875	2.7657	4 1/8	3 3/8	1/2	1 3/4	7/32	7/32	9/32	3/4 - 21/16	3	3/8 x 1 1/4	3.5	348
Q2	3 1/2	17/32	2 31/32	2.875	2.7032	4 1/8	3 3/8	1/2	2 3/4	7/32	7/32	9/32	1" - 21/16	3	3/8 x 1 1/4	4.5	348
Q3	5	17/32	4 15/32	2.875	2.6094	4 1/8	3 3/8	1/2	4 1/4	7/32	7/32	9/32	1 3/8 - 21/16	3	3/8 x 1 1/4	5.5	348
R1	2 7/8	5/8	2 1/4	4.000	3.8750	5 3/8	4 5/8	3/4	2"	1/4	1/4	9/32	1 1/8 - 213/16	3	3/8 x 1 3/4	7.5	348
R2	4 7/8	5/8	4 1/4	4.000	3.7500	5 3/8	4 5/8	3/4	4"	1/4	1/4	9/32	1 3/8 - 213/16	3	3/8 x 1 3/4	11	348

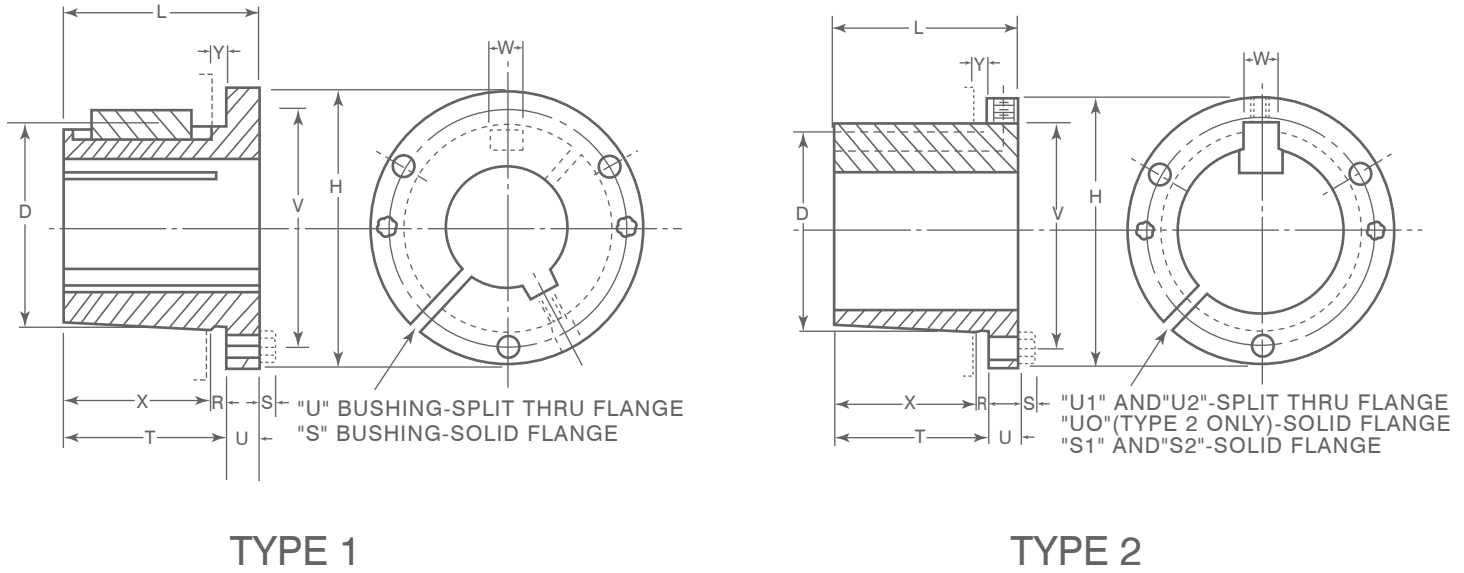
TYPE 2

Bushing Specifications

Part No.	Dimensions												Type 2 Bore Range	Cap Screws		Av. Wt. Lbs.	Wrench Torque In. -Lbs.
	L	U	T	D		H	V	W	X	Y	R	S		No.	Size		
				Large End	Small End												
P1	1 15/16	13/32	1 17/32	1.9375	1.8555	3	27/16	3/8"	15/16	7/32	7/32	1/4	1 1/2 - 13/4	3	5/16 x 1	1.3	192
P2	2 15/16	13/32	2 17/32	1.9375	1.7930	3	27/16	3/8	25/16	7/32	7/32	1/4	1 1/2 - 13/4	3	5/16 x 1	1.5	192
P3	4 7/16	13/32	4 1/32	1.9375	1.6993	3	27/16	3/8	3 13/16	7/32	7/32	1/4	15/8	3	5/16 x 1	2	192
B	1 15/16	1/2	1 7/16	2.625	2.5567	3 11/16	3 1/8	1/2	13/16	7/32	1/4	1/4	2 - 27/16	3	5/16 x 1 1/4	1.8	192
Q1	2 1/2	17/32	1 31/32	2.875	2.7657	4 1/8	3 3/8	1/2	1 3/4	7/32	7/32	9/32	2 1/8 - 211/16	3	3/8 x 1 1/4	3.5	348
Q2	3 1/2	17/32	2 31/32	2.875	2.7032	4 1/8	3 3/8	1/2	2 3/4	7/32	7/32	9/32	2 1/8 - 25/8	3	3/8 x 1 1/4	4.5	348
Q3	5	17/32	4 15/32	2.875	2.6094	4 1/8	3 3/8	1/2	4 1/4	7/32	7/32	9/32	2 1/8 - 21/2	3	3/8 x 1 1/4	5.5	348
R1	2 7/8	5/8	2 1/4	4.000	3.8750	5 3/8	4 5/8	3/4	2	1/4	1/4	9/32	2 7/8 - 33/4	3	3/8 x 1 3/4	7.5	348
R2	4 7/8	5/8	4 1/4	4.000	3.7500	5 3/8	4 5/8	3/4	4	1/4	1/4	9/32	2 7/8 - 35/8	3	3/8 x 1 3/4	11	348

# STL Taper bushing

S-U



## TYPE 1

## Bushing Specifications

Part No.	Dimensions												Type 1 Bore Range	Cap Screws		Av. Wt. Lbs.	Wrench Torque In. -Lbs.
	L	U	T	D		H	V	W	X	Y	R	S		No.	Size		
				Large End	Small End												
S1	43/8	3/4	35/8	4.625	4.4180	63/8	53/8	3/4	35/16	5/16	5/16	3/8	111/16 - 33/16	3	1/2 x 21/4	13.5	840
S2	63/4	3/4	6"	4.625	4.2696	63/8	53/8	3/4	511/16	5/16	5/16	3/8	17/8 - 33/16	3	1/2 x 21/4	19	840
U0	51/4	11/16	43/16	6.000	5.7656	83/8	7"	11/4	33/4	7/16	7/16	15/32	23/8 - 31/16	3	5/8 x 23/4	30	1680
U0	415/16	3/4	43/16	6.000	5.7656	83/8	7"	11/4	33/4	7/16	7/16	15/32	31/4 - 41/4	3	5/8 x 23/4	27	1680
U1	71/8	11/16	61/16	6.000	5.6485	83/8	7"	11/4	55/8	7/16	7/16	15/32	23/8 - 41/4	3	5/8 x 23/4	40	1680
U2	101/8	11/16	91/16	6.000	5.4610	83/8	7"	11/4	85/8	7/16	7/16	15/32	27/16 - 41/4	3	5/8 x 23/4	50	1680

## TYPE 2

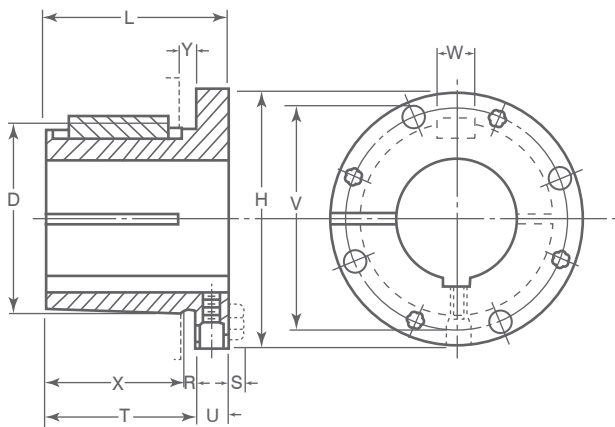
## Bushing Specifications

Part No.	Dimensions												Type 2 Bore Range	Cap Screws		Av. Wt. Lbs.	Wrench Torque In. -Lbs.
	L	U	T	D		H	V	W	X	Y	R	S		No.	Size		
				Large End	Small End												
S1	43/8	3/4	35/8	4.625	4.4180	63/8	53/8	3/4	35/16	5/16	5/16	3/8	31/4 - 41/4	3	1/2 x 21/4	13.5	840
S2	63/4	3/4	6"	4.625	4.2696	63/8	53/8	3/4	511/16	5/16	5/16	3/8	31/4 - 43/16	3	1/2 x 21/4	19	840
U0	51/4	11/16	43/16	6.000	5.7656	83/8	7"	11/4	33/4	7/16	7/16	15/32	—	3	5/8 x 23/4	30	1680
U0	415/16	3/4	43/16	6.000	5.7656	83/8	7"	11/4	33/4	7/16	7/16	15/32	43/8 - 51/2	3	5/8 x 23/4	27	1680
U1	71/8	11/16	61/16	6.000	5.6485	83/8	7"	11/4	55/8	7/16	7/16	15/32	43/8 - 51/2	3	5/8 x 23/4	40	1680
U2	101/8	11/16	91/16	6.000	5.4610	83/8	7"	11/4	85/8	7/16	7/16	15/32	43/8 - 5	3	5/8 x 23/4	50	1680

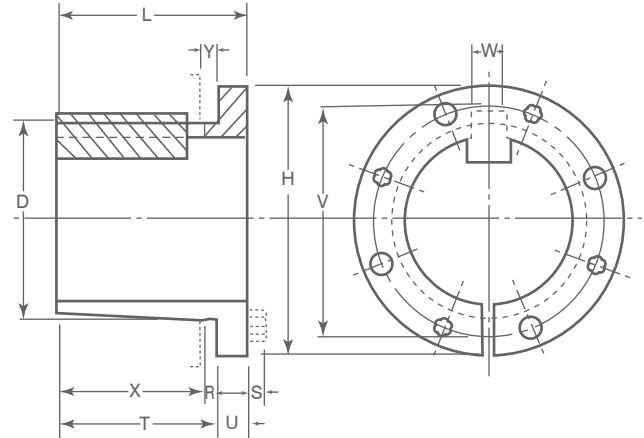


# STL Taper bushing

W-Y



TYPE 1



TYPE 2

## TYPE 1

### Bushing Specifications

Part No.	Dimensions												Type 1 Bore Range	Cap Screws		Av. Wt. Lbs.	Wrench Torque In. -Lbs.
	L	U	T	D		H	V	W	X	Y	R	S		No.	Size		
				Large End	Small End												
W1	8 1/4	1 7/16	6 13/16	8.500	8.1016	12 1/2	10"	1 1/4	6 3/8	7/16	7/16	9/16	3 3/8 - 6 3/16	4	3/4 x 3	104	3000
W2	11 1/4	1 7/16	9 13/16	8.500	7.9141	12 1/2	10"	1 1/4	9 3/8	7/16	7/16	9/16	3 3/8 - 6 3/16	4	3/4 x 3	133	3000
Y0*	11 1/8	2"	9 1/8	12.000	11.4688	16 1/2	14 1/2	2	8 1/2	5/8	5/8	5/8	6 - 7 15/16	4	1 x 5	270	7200

## TYPE 2

### Bushing Specifications

Part No.	Dimensions												Type 2 Bore Range	Cap Screws		Av. Wt. Lbs.	Wrench Torque In. -Lbs.
	L	U	T	D		H	V	W	X	Y	R	S		No.	Size		
				Large End	Small End												
W1	8 1/4	1 7/16	6 13/16	8.500	8.1016	12 1/2	10	1 1/4	6 3/8	7/16	7/16	9/16	6 1/4 - 7 7/16	4	3/4 x 3	104	3000
W2	11 1/4	1 7/16	9 13/16	8.500	7.9141	12 1/2	10	1 1/4	9 3/8	7/16	7/16	9/16	6 1/4 - 7 7/16	4	3/4 x 3	133	3000
Y0*	11 1/8	2	9 1/8	12.000	11.4688	16 1/2	14 1/2	2	8 1/2	5/8	5/8	5/8	8 - 10	4	1 x 5	270	7200



**STL BUSHING DIMENSIONS AND RANGES FOR INNER BORES AND KEYWAY**

**A2**

Bush	Bore	Keyway	Bush	Bore	Keyway	Bush	Bore	Keyway	Bush	Bore	Keyway	Bush	Bore	Keyway	Bush	Bore	Keyway	
U <sub>0</sub>	311/16	7/8x7/16	U <sub>1</sub>	5	1 1/4x5/8	1 1/4x5/8	45/8	1 1/4x5/8	W <sub>2</sub>	57/16	1 1/4x5/8	P <sub>1</sub>	14	Q <sub>1</sub>	55	16x5		
	33/4			5 1/8			411/16			5 1/2			15		5x2.5	60	18x5.5	
	37/8	53/16		43/4			55/8			16			6x3		65	10x4		
	315/16	51/4		47/8			53/4			18					28		8x3.5	
	4	53/8		415/16			57/8			19					30		12x4	
	4 1/8	57/16		5			515/16			20					32			
	43/16	51/2		51/8			6			22			35		14x4.5			
	41/4	27/16		53/16			61/8			24			36					
	43/8	21/2		51/4			63/16			25			38		16x5			
	47/16	29/16		53/8			61/4			28			39					
	41/2	25/8	57/16	63/8	30	40	18x5.5											
	U <sub>1</sub>	45/8	211/16	51/2	67/16	32		42	20x6									
		411/16	23/4	55/8	61/2	35	45											
		43/4	213/16	53/4	65/8	36	48	22x7										
		47/8	27/8	57/8	63/4	38	50											
		415/16	215/16	515/16	67/8	39	55	25x7										
		5	3	6	615/16	40	60											
		5 1/8	31/8	61/8	7	42	65	20x6										
		53/16	33/16	63/16	71/8	15	70											
		51/4	31/4	61/4	73/16	16	75	22x7										
53/8		33/8	63/8	71/4	18	80												
57/16	37/16	67/16	73/8	19	85	25x7												
51/2	31/2	61/2	77/16	20	90													
U <sub>1</sub>	23/8	5/8x5/16	U <sub>2</sub>	35/8	7/8x7/16	W <sub>1</sub>	65/8	1 3/4x3/4	W <sub>2</sub>	<b>STOCK MILLIMETER BORE BUSHINGS</b>			B	22	R <sub>1</sub>	95	10x4	
	27/16			311/16			63/4							24		35		
	21/2			33/4			67/8							25		36		8x3.5
	29/16			37/8			615/16							28		38		
	25/8			315/16			7							30		39		12x4
	211/16			4			71/8							32		40		
	23/4			41/8			73/16							35		42		14x4.5
	213/16			43/16			71/4							36		45		
	27/8			41/4			73/8							38		48		16x5
	215/16			43/8			77/16							39		50		
	3	47/16	33/8	40	55	18x5.5												
	31/8	41/2	37/16	42	60													
	33/16	45/8	31/2	45	65	20x6												
	31/4	411/16	35/8	48	70													
	U <sub>2</sub>	33/8	43/4	311/16	19	50	14x4.5											
		37/16	47/8	33/4	20	55		16x5										
		31/2	415/16	37/8	22	60	18x5.5											
		35/8	5	315/16	24	60		18x5.5										
		311/16	33/8	4	25	18	6x3											
		33/4	37/16	41/8	10	19												
U <sub>2</sub>		313/16	31/2	43/16	11	20	8x3.5											
		37/8	35/8	41/4	12	22												
		315/16	311/16	43/8	14	24	8x3.5											
		4	33/4	47/16	16	25												
	4 1/8	37/8	41/2	18	28	10x4												
	43/16	315/16	45/8	19	30													
	41/4	4	411/16	20	32	12x4												
	43/8	41/8	43/4	22	35													
	47/16	43/16	47/8	24	36	14x4.5												
	41/2	41/4	415/16	25	38													
45/8	43/8	5	28	39	10x4													
411/16	47/16	51/8	30	40														
43/4	41/2	53/16	32	42	12x4													
47/8	41/2	51/4	35	45														
415/16	41/2	53/8	36	48	14x4.5													
			38	50														